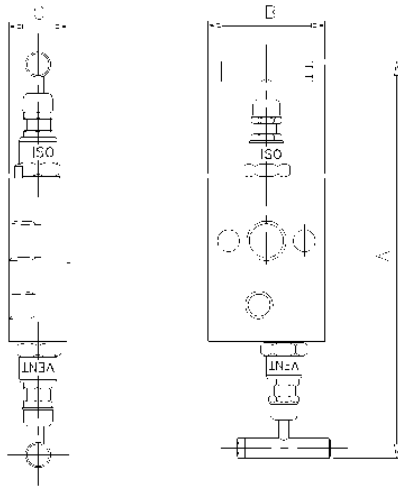


Product Data Sheet

Y24 and Y25 Type 2 Valve Manifold



The 'Y24' and 'Y25' Type 2-valve manifold is designed for direct mounting to static pressure transmitters. The separate vent valve gives full control of venting of the instrument, plus the ability to calibrate in-situ. Each needle valve head is designed for safe and reliable isolation, giving bubble tight shut off, with non-rotating & anti-galling tip and dynamic self-adjusting spindle seal to give long service life in a variety of service conditions.

Part No.	Connections Size"	A	B	C	Weight (Kgs)
Y24	1/2" F x FLANGE	8.5	2.5	1.2	1.4
Y25	FLANGE x FLANGE	8.5	2.5	1.2	1.4

Key Features of the Oliver Needle Valve range

- Non rotating tip - self centering & anti-galling
- Piston ring - gives dynamic adjustment of gland seal in response to pressure change
- Anti-blow out spindle - a major safety feature
- Secure seal - precision machined to give leak free operation for the life of the valve. Available in either PTFE or graphite foil

Standard Specification

Pressure: 6000psi	Packing: PTFE	Handle: T-Bar	Bore: 0.21" (5.4mm)
Temp: 240 deg C	Thread form: NPT	Seat: Metal to metal	CV: 0.46
2 x 7/16" UNF bolts for mounting to transmitter		1 x PTFE or graphite foil seal ring for transmitter flange	
1/2" Connection (on Y24)		1/4" NPT Vent Connection	

Ordering Code

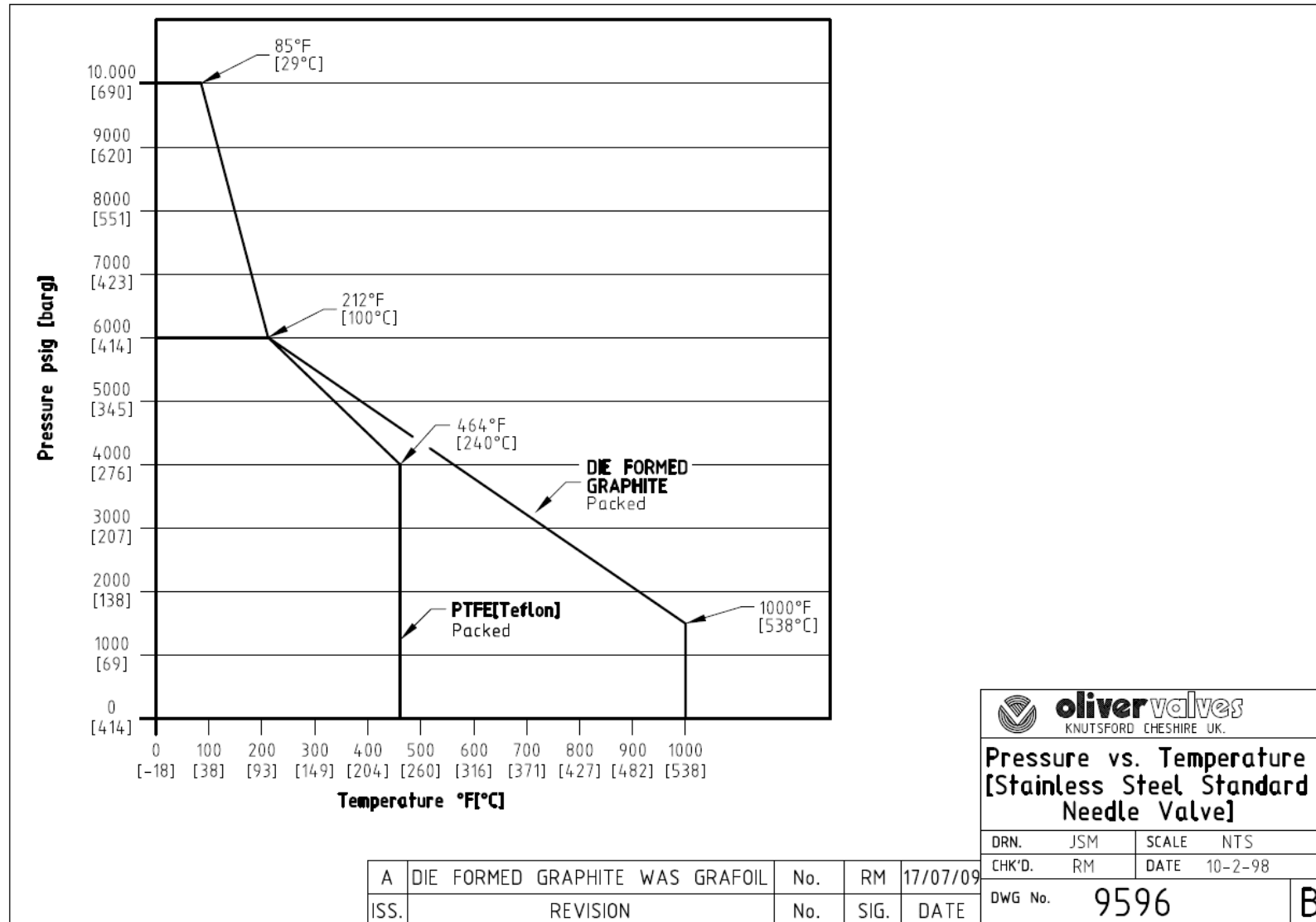
(Typical example) →		Y24	S	/	BT	/	AT
Type							
Y24 - Female x Flanged							
Y25 - Flanged x Flanged							
Material							
S - 316S31 Stainless Steel							
M - Monel (400)							
HC - Hastalloy (C276)							
(Others available)							
Optional Connections (NPT Standard)							
BT - BSP Taper (Y24 only)							
BP - BSP Parallel (top sealing) (Y24 only)							
BTV - BSP Taper Vent							
BPV - BSP Parallel Vent							
FSW - Female Socket Weld (Y24 only)							
Options							
AG - Graphite Foil							
AT - Anti-Tamper							
BKTC - Carbon steel mounting bracket							
BKTS - Stainless steel mounting bracket							
HL - Handle Locking							
HL-PI - Handle Locking + Position Indicator							
HW - Hand Wheel							
LT100 - Cryogenic Head Unit (-100°C)							
MT - Metering Tip							
MTG - Tapped Mounting Holes x 2							
NA - NACE MR-01-75 (latest revision)							
OXY - Oxygen Cleaned							
PK - PEEK Soft Tip							
PP - Blank Plug In Vent Connection							
SSB - Stainless steel transmitter mounting bolts							
(4800 psi max pressure rating)							

Rev 1.2

Oliver Valves Ltd, Parkgate Industrial Estate, Knutsford, Cheshire, WA16 8DX. United Kingdom.

T: +44 (0)1565 632636 E: sales@valves.co.uk W: www.valves.co.uk

© Oliver Valves Ltd 2010



Oliver Valves Ltd, Parkgate Industrial Estate, Knutsford, Cheshire, WA16 8DX. United Kingdom.

T: +44 (0)1565 632636 E: sales@valves.co.uk W: www.valves.co.uk