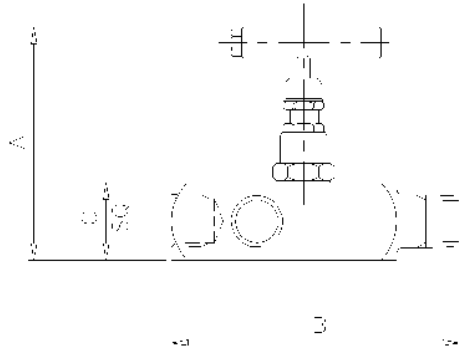


Product Data Sheet

GM Type Needle Valve



The 'GM1' Type Gauge Multiport Needle Valve is designed for safe and reliable isolation, giving bubble tight shut off, with non-rotating & anti-galling tip and dynamic self-adjusting spindle seal to give long service life in a variety of applications. The valve has three outlet connections for flexible instrument hook up plus the ability to calibrate the instrument in-situ.

Part No.	Connections Size	A	B	C	Weight (Kgs)
GM1	1/2"	3.8	4.6	1.3	0.7
GM1F	1/2"	3.8	3.3	1.3	0.7
GM175-50	3/4" x 1/2"	3.8	4.6	1.3	0.7

Key Features of the Oliver Needle Valve range

- Non rotating tip - self centering & anti-galling
- Piston ring - gives dynamic adjustment of gland seal in response to pressure change
- Anti-blow out spindle - a major safety feature
- Secure seal - precision machined to give leak free operation for the life of the valve. Available in either PTFE or Grafoil

Standard Specification

Pressure: 6000psi	Packing: PTFE	Handle: T-Bar	Bore: 0.21" (5.4mm)
Temp: 240 deg C	Thread form: NPT	Seat: Metal to metal	CV: 0.46
1/2" Inlet / Outlet Connections	3 x Outlet Connections		

Ordering Code

(Typical example) →	GM1	S	/	BT	/	AT
Type	GM1 - Male x Female GM1F - Female x Female GM175-50 - Male x Female					
Material	S - 316S31 Stainless Steel M - Monel (400) HC - Hastalloy (C276) (Others available)					
Optional Connections (NPT Standard)	BT - BSP Taper BP - BSP Parallel (top sealing) BW-SCH*** - Butt Weld (Schedule ***)					
Options	AG - Grafoil AT - Anti-Tamper HL - Handle Locking HL-PI - Handle Locking + Position Indicator HW - Hand Wheel LT100 - Cryogenic Head Unit (-100°C) MT - Metering Tip					MTG - Mounting Holes x 2 NA - NACE MR-01-75 (latest revision) OXY - Oxygen Cleaned PK - PEEK Soft Tip (not available oxygen cleaned) PP - Blank Plug In One Outlet VP - Bleed Plug In One Outlet

Rev 1.1

Oliver Valves Ltd, Parkgate Industrial Estate, Knutsford, Cheshire, WA16 8DX. United Kingdom.

T: +44 (0)1565 632636 E: sales@valves.co.uk W: www.valves.co.uk

© Oliver Valves Ltd 2009