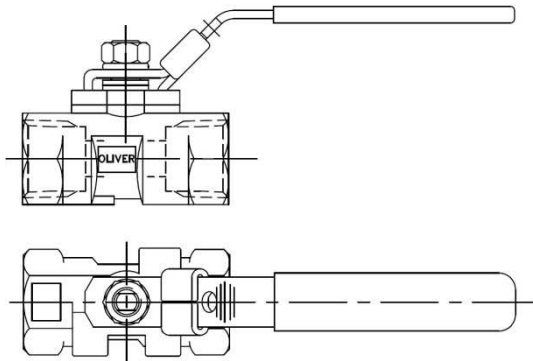


**Product Data Sheet**

**LP Type Ball Valve**



These high performance quality ball valves are stocked in 316 stainless steel. Even the pressed handle on the valve is 316 stainless steel to avoid rusting on site.

Offered in pressure ranges 1000 PSI to 3000 PSI and sizes from 9mm to 19mm diameter bores these valves are recommended for use in oil, gas and petrochemical applications where reliable long-term performance is essential.

Threaded connections are NPT, Handle Locking Standard, NACE Standard, Firesafe Standard (on 3000 PSI version)

**Key Features of the Oliver Ball Valve range**

- Enclosed soft seats giving positive sealing and low torque operation across the pressure range
- One-piece spindle with anti-blowout shoulder that maintains seal integrity at all pressures
- Precision machined ball for smooth operation through 90 degrees to give straight through bore
- 316 stainless steel one-piece handle fitted with twin anti-vibration locknuts

**Standard Specification**

Pressure: 1000psi	Seals: PTFE	Seats: PTFE/PVDF
Temp: 120 deg C (PTFE/PVDF)	Thread form: NPT	Handle: Lever

**Ordering Code**

(Typical example) →		LPB1F	50	S
Type				
LPB – low pressure ball valve				
1 – 1000PSI				
3 – 3000PSI				
F - female				
Size (bore sizes available)				
25 - 1/4" (X=10mm)				
38 - 3/8" (X=10mm)				
50 - 1/2" (X=10mm/Y=14mm)				
75 - 3/4 " (Y=14mm/Z=20mm)				
Material				
S - 316S31 Stainless Steel				