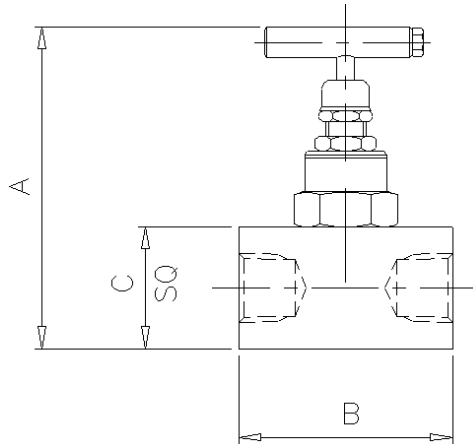


## Product Data Sheet

## HD Type Needle Valve



The 'HD' Type Single Isolating Needle Valve is designed for safe and reliable isolation giving bubble tight shut off, non-rotating & anti-galling tip and dynamic self-adjusting spindle seal to give long service life in a variety of high temperature and high pressure applications. This valve can also be supplied Firesafe tested to BS6755 PT2.

Part No.	Connections Size	A	B	C	Weight (Kgs)
F25*/HD	1/4"	4.1	2.1	1.5	0.8
F50*/HD	1/2"	4.1	2.6	1.5	0.8
M25*/HD	1/4"	4.1	2.8	1.5	0.8
M50*/HD	1/2"	4.1	3.4	1.5	0.8

### Key Features of the Oliver Needle Valve range

- Non rotating tip - self centering & anti-galling
- Piston ring - gives dynamic adjustment of gland seal in response to pressure change
- Anti-blow out spindle - a major safety feature
- Secure seal - precision machined to give leak free operation for the life of the valve. Available in either PTFE or Grafoil

### Standard Specification

Pressure: 6000psi	Packing: Grafoil	Handle: T-Bar	Bore: 0.21" (5.4mm)
Temp: 540 deg C	Thread form: NPT	Seat: Metal to metal	CV: 0.46

### Ordering Code

(Typical example) → **F** **50** **S** / **FS**

<b>Type</b>				
F - Female x Female M - Male x Female				
<b>Size</b>				
25 - 1/4" 50 - 1/2"				
<b>Material</b>				
S - 316S31 Stainless Steel M - Monel (400) HC - Hastalloy (C276) (Others available)				
<b>Options</b>				
AT - Anti-Tamper HL - Handle Locking HL-PI - Handle Locking + Position Indicator FS - Firesafe to BS6755 Pt2/API607 Rev 4 (up to 6000 psi only) HD/15HP - 15000 psi (PTFE packing - Max temp 240 deg C) HD/HP - 10000 psi MTG - Mounting Holes x 2 NA - NACE MR-01-75 (latest revision)				