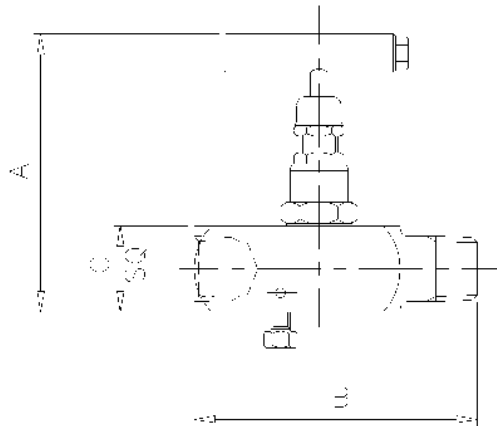


Product Data Sheet

GB Type Needle Valve



The 'GB' Type Gauge Bleed Needle Valve is designed for safe and reliable isolation, giving bubble tight shut off, with non-rotating & anti-galling tip and dynamic self-adjusting spindle seal to give long service life in a variety of applications. The additional ability to bleed the gauge cavity to atmosphere, for simple calibration, is included.

Part No.	Connections Size	A	B	C	Weight (Kgs)
GB1F	1/2"	3.6	2.9	1.1	0.5
GB1M	1/2"	3.6	3.9	1.1	0.5

Key Features of the Oliver Needle Valve range

- Non rotating tip - self centering & anti-galling
- Piston ring - gives dynamic adjustment of gland seal in response to pressure change
- Anti-blow out spindle - a major safety feature
- Secure seal - precision machined to give leak free operation for the life of the valve. Available in either PTFE or Grafoil

Standard Specification

Pressure: 6000psi	Packing: PTFE	Handle: T-Bar	Bore: 0.21" (5.4mm)
Temp: 240 deg C	Thread form: NPT	Seat: Metal to metal	CV: 0.46
1/2" Inlet / Outlet Connections		1/4" UNF Bleed Screw	

Ordering Code

(Typical example) →		GB1F	S	/	BT	/	AT
Type							
GB1F - Female x Female							
GB1M - Male x Female							
Material							
S - 316S31 Stainless Steel							
M - Monel (400)							
HC - Hastalloy (C276)							
(Others available)							
Optional Connections (NPT Standard)							
BT - BSP Taper							
BP - BSP Parallel (top sealing)							
BW-SCH*** - Butt weld (Schedule ***)							
Options							
AG - Grafoil		LT100 - Cryogenic Head Unit (-100°C)					
AT - Anti-Tamper		MT - Metering Tip					
HL - Handle Locking		NA - NACE MR-01-75 (latest revision)					
HL-PI - Handle Locking + Position Indicator		OXY - Oxygen Cleaned					
HW - Hand Wheel		PK - PEEK Soft Tip (not available oxygen cleaned)					

Rev 1.1

Oliver Valves Ltd, Parkgate Industrial Estate, Knutsford, Cheshire, WA16 8DX. United Kingdom.

T: +44 (0)1565 632636 E: sales@valves.co.uk W: www.valves.co.uk

© Oliver Valves Ltd 2009