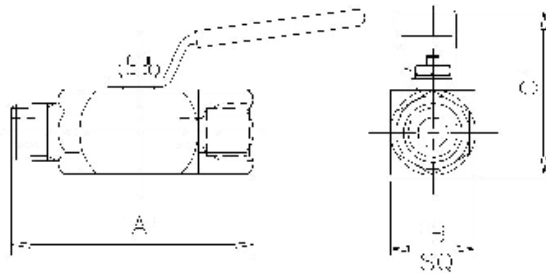


## Product Data Sheet

## B6M Type Ball Valve



The 'B6' Type Single Isolating Ball Valve is designed for safe and reliable isolation giving bubble tight shut off. Totally enclosed soft seats offer both positive sealing and low operating torques, from vacuum to high-pressure service. Anti-blow out spindle is fitted as standard with the option of PTFE or Grafoil seals.

Part No.	Connection Size	A	B	C	Weight (Kgs)
B6MX25	1/4"	2.9	1.3	2.5	0.4
B6MX38	3/8"	3.0	1.3	2.5	0.4
B6MX50	1/2"	3.6	1.3	2.5	0.5
B6MY75	3/4"	4.8	1.5	3.0	1.1
B6MZ10	1"	5.7	2.0	3.5	1.9

### Key Features of the Oliver Ball Valve range

- Totally enclosed soft seats giving positive sealing and low torque operation across pressure range
- One-piece spindle with anti-blowout shoulder that maintains seal integrity at all pressures
- Precision machined ball for smooth operation through 90 degrees to give straight through bore
- Either PTFE or Grafoil spindle and body seals to give high body integrity
- 316 stainless steel one-piece handle fitted with twin anti-vibration locknuts

### Standard Specification

Pressure: 6000psi	Seals: PTFE	Seals: PTFE/PVDF, PTFE/KEL-F or PEEK	
Temp: 120 deg C (PTFE/PVDF) or 200 deg C (PTFE/KEL-F and PEEK)	Thread form: NPT	Handle: Lever	

### Ordering Code

(Typical example) → <b>B6MX</b>	<b>50</b>	<b>S</b>	/	<b>BT</b>	/	<b>FS</b>
<b>Type</b>						
B6 = Ball valve 6000 psi M = Male x Female X = 10mm bore Y = 14mm bore Z = 20mm bore						
<b>Size (bore sizes available)</b>						
25 - 1/4" (X=10mm) 38 - 3/8" (X=10mm) 50 - 1/2" (X=10mm/Y=14mm) 75 - 3/4" (Y=14mm/Z=20mm) 10 - 1" (Z=20mm)						
<b>Material</b>						
S - 316S31 Stainless Steel      HC - Hastalloy C276 M - Monel (400)      (Others available)						
<b>Optional Connections (NPT Standard)</b>						
BT - BSP Taper      BW - Butt weld (specify schedule) BP - BSP Parallel (top sealing)      MSW - Male Socket Weld						
<b>Options</b>						
FS - Firesafe to BS6755 Pt2/API 607 Rev4      OH - Oval Handle HL - Handle Locking      PE - Pinned End Connectors (prevents accidental removal) KF - PTFE/Kel-F seats (10mm only)      PMHB - 4 x M5 mounting holes in base for panel mounting NA - NACE MR-01-75 (latest revision)      PMHT - 4 x M5 mounting holes in top for panel mounting						

Oliver Valves Ltd, Parkgate Industrial Estate, Knutsford, Cheshire, WA16 8DX. United Kingdom.

T: +44 1565 632636 E: sales@valves.co.uk W: [www.valves.co.uk](http://www.valves.co.uk)

© Oliver Valves Ltd 2009