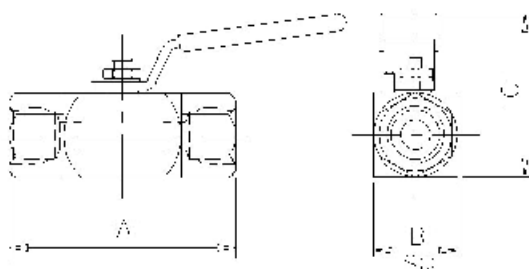


Product Data Sheet

B6F Type Ball Valve



The 'B6' Type Single Isolating Ball Valve is designed for safe and reliable isolation giving bubble tight shut off. Totally enclosed soft seats offer both positive sealing and low operating torques, from vacuum to high-pressure service. Anti-blow out spindle is fitted as standard with the option of PTFE or Grafoil seals.

| Part No. | Connections Size | A | B | C | Weight (Kgs) |
|----------|------------------|-----|-----|-----|--------------|
| B6FX25 | 1/4" | 2.4 | 1.3 | 2.5 | 0.4 |
| B6FX38 | 3/8" | 2.4 | 1.3 | 2.5 | 0.4 |
| B6FX50 | 1/2" | 3.4 | 1.3 | 2.5 | 0.5 |
| B6FY75 | 3/4" | 4.1 | 1.5 | 3.0 | 1.1 |
| B6FZ10 | 1" | 4.8 | 2.0 | 3.5 | 1.9 |

Key Features of the Oliver Ball Valve range

- Enclosed soft seats giving positive sealing and low torque operation across the pressure range
- One-piece spindle with anti-blowout shoulder that maintains seal integrity at all pressures
- Precision machined ball for smooth operation through 90 degrees to give straight through bore
- Either PTFE or Grafoil spindle and body seals to give high body integrity
- 316 stainless steel one-piece handle fitted with twin anti-vibration locknuts

Standard Specification

| | | | |
|--|-------------|--------------------------------------|---------------|
| Pressure: 6000psi | Seals: PTFE | Seats: PTFE/PVDF, PTFE/KEL-F or PEEK | |
| Temp: 120 deg C (PTFE/PVDF) or 200 deg C (PTFE/KEL-F and PEEK) | | Thread form: NPT | Handle: Lever |

Ordering Code

| | | | | | | | |
|---|-------------|-----------|----------|---|-----------|---|-----------|
| (Typical example) → | B6FX | 50 | S | / | BT | / | FS |
| Type | | | | | | | |
| B6 = Ball valve 6000 psi F = Female x Female X = 10mm bore Y = 14mm bore Z = 20mm bore | | | | | | | |
| Size (bore sizes available) | | | | | | | |
| 25 - 1/4" (X=10mm) 75 - 3/4" (Y=14mm/Z=20mm) 38 - 3/8" (X=10mm) 10 - 1" (Z=20mm) 50 - 1/2" (X=10mm/Y=14mm) | | | | | | | |
| Material | | | | | | | |
| S - 316S31 Stainless Steel HC - Hastalloy C276 M - Monel (400) (Others available) | | | | | | | |
| Optional Connections (NPT Standard) | | | | | | | |
| BT - BSP Taper BP - BSP Parallel (top sealing) SW - Socket Weld | | | | | | | |
| Options | | | | | | | |
| FS - Firesafe to BS6755 Pt2/API 607 Rev4 HL - Handle Locking KF - PTFE/Kel-F seats (10mm only) NA - NACE MR-01-75 (latest revision) OH - Oval Handle PE - Pinned End Connectors (prevents accidental removal) PMHB - 4 x M5 mounting holes in base for panel mounting PMHT - 4 x M5 mounting holes in top for panel mounting | | | | | | | |

Oliver Valves Ltd, Parkgate Industrial Estate, Knutsford, Cheshire, WA16 8DX. United Kingdom.

T: +44 1565 632636 E: sales@valves.co.uk W: www.valves.co.uk

© Oliver Valves Ltd 2009