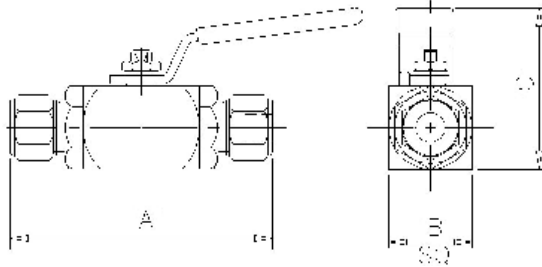


Product Data Sheet

B6BI Type Ball Valve



The 'B6' Type Single Isolating Ball Valve is designed for safe and reliable isolation giving bubble tight shut off. Totally enclosed soft seats offer both positive sealing and low operating torques, from vacuum to high-pressure service. Anti-blow out spindle is fitted as standard with the option of PTFE or Grafoil seals.

Part No.	Size	A	B	C	Weight (Kgs)
B6BIX6MM	6mm	4.0	1.3	2.5	0.4
B6BIX10MM	10mm	4.0	1.3	2.5	0.4
B6BIX12MM	12mm	4.1	1.3	2.5	0.5
B6BIX25	1/4"	3.9	1.3	2.5	0.4
B6BIX38	3/8"	3.9	1.3	2.5	0.4
B6BIX50	1/2"	4.1	1.3	2.5	0.5

Key Features of the Oliver Ball Valve range

- Totally enclosed soft seats giving positive sealing and low torque operation across the pressure range
- One-piece spindle with anti-blowout shoulder that maintains seal integrity at all pressures
- Precision machined ball for smooth operation through 90 degrees to give straight through bore
- Either PTFE or Grafoil spindle and body seals to give high body integrity
- 316 stainless steel one-piece handle fitted with twin anti-vibration locknuts

Standard Specification

Pressure: 6000psi	Seals: PTFE	Seats: PTFE/PVDF or PTFE/KEL-F	
Temp: 120 deg C (PTFE/PVDF) or 200 deg C (PTFE/KEL-F)		Connections: Twin Ferrule 'Bilok'	Handle: Lever

Ordering Code

(Typical example) → **B6BIX 50 S / NF**

Type

B6 = Ball valve 6000 psi
B I = Bilok connections
X = 10mm bore

Size (10mm bore size only)

25 - 1/4"OD 6MM - 6mm OD
38 - 3/8"OD 10MM - 10mm OD
50 - 1/2"OD 12MM - 12mm OD

Material

S - 316S31 Stainless Steel
M - Monel (400)
HC - Hastalloy C276
(Others available)

Options

FS - Firesafe to BS6755 Pt2/API 607 Rev4
HL - Handle Locking
KF - PTFE/Kel-F seats
NA - NACE MR-01-75 (latest revision)
NF - Nuts and ferrules included

OH - Oval Handle
PE - Pinned End Connectors (prevents accidental removal)
PMHB - 4 x M5 mounting holes in base for panel mounting
PMHT - 4 x M5 mounting holes in top for panel mounting