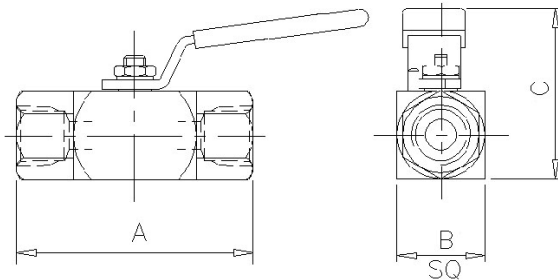


## Product Data Sheet

## B10F Type Ball Valve



The 'B10' Type Single Isolating Ball Valve is designed for safe and reliable isolation giving bubble tight shut off. Totally enclosed soft seats offer both positive sealing and low operating torques, from vacuum to high-pressure service. Anti-blow out spindle is fitted as standard with the option of PTFE or Grafoil seals.

Part No.	Connections Size	A	B	C	Weight (Kgs)
B10FX25	1/4"	2.4	1.3	2.5	0.4
B10FX38	3/8"	2.4	1.3	2.5	0.4
B10FX50	1/2"	2.4	1.3	2.5	0.5

## Key Features of the Oliver Ball Valve range

- Totally enclosed soft seats giving positive sealing and low torque operation across the pressure range
- One-piece spindle with anti-blowout shoulder that maintains seal integrity at all pressures
- Precision machined ball for smooth operation through 90 degrees to give straight through bore
- Either PTFE or Grafoil spindle and body seals to give high body integrity
- 316 stainless steel one-piece handle fitted with twin anti-vibration locknuts

## Standard Specification

Pressure: 10,000psi	Seals: PTFE	Seats: PTFE/KEL-F
Temp: 200 deg C	Thread form: NPT	Handle: Lever

## Ordering Code

(Typical example) → **B10FX** **50** **S** / **BT** / **FS**

### Type

B10 = Ball valve 10,000 psi  
F = Female x Female  
X = 10mm bore

### Size (10mm bore size only)

25 - 1/4"  
38 - 3/8"  
50 - 1/2"

### Material

S - 316S31 Stainless Steel  
M - Monel (400)  
HC - Hastalloy C276  
(Others available)

### Optional Connections (NPT Standard)

BT - BSP Taper  
BP - BSP Parallel (top sealing)  
SW - Socket Weld

### Options

FS - Firesafe to BS6755 Pt2/API 607 Rev4  
(Firesafe approval to 6000 psi only)  
HL - Handle Locking  
NA - NACE MR-01-75 (latest revision)

OH - Oval Handle  
PE - Pinned End Connectors (prevents accidental removal)  
PMHB - 4 x M5 mounting holes in base for panel mounting  
PMHT - 4 x M5 mounting holes in top for panel mounting