

OLIVER VALVES OFFER A RANGE OF MINIATURE NEEDLE VALVES FOR COMPACT INSTALLATION WHERE SPACE AND WEIGHT MAY BE AN ISSUE.

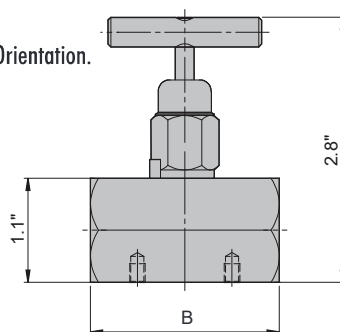
- STD working pressure 6,000 PSI (414 BA/HP option).
- Max working pressure 10,000 PSI (690 Bar) .
- Temperature - 20°C (-29°C) to 350 F (180°C).
- Low operating torque.
- Non Rotating Anti Galling Tip.
- Anti blow out spindle with back seat.
- To Nace MR-01-75 / ISO 15156 compliant.
- Panel Mounting M5 (x two) tapped mounting holes in valve body as standard.
- 316 Stainless steel construction.
- Other materials available on request.

MFF TYPE



Miniature needle valve
1/4" NPT Female x Female Thread Orientation.

PART	'B' LENGTH
MFF25	2.0
MFF50	2.6

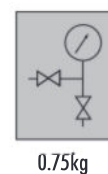
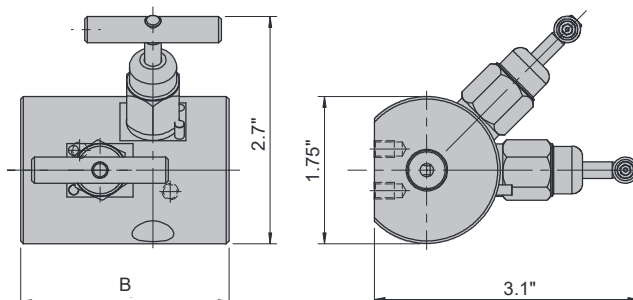


MG12AF TYPE



Miniature two valve manifold
NPT Female x Female Thread Orientation.
1/4" Vent only.

PART	'B' LENGTH
MG12AF/25F	2.5
MG12AF/50F	2.8

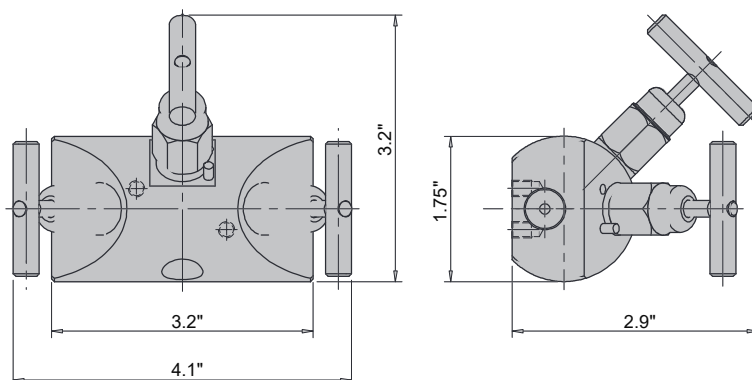


MDBBINPM/MTG TYPE



Miniature double block and bleed valve manifold
NPT Female x Female Thread Orientation.
1/4" Vent only.

PART
MDBBINPM/25F



0.9kg

OPTIONS

Connection sizes = Above shown with 1/4" NPT (25) connections, but also available with 1/2" NPT (replace with 50).

Connection Orientation = Above shown with Female x Female thread connections also available in Male x Female connections. (replace F or FF with M or MM).

