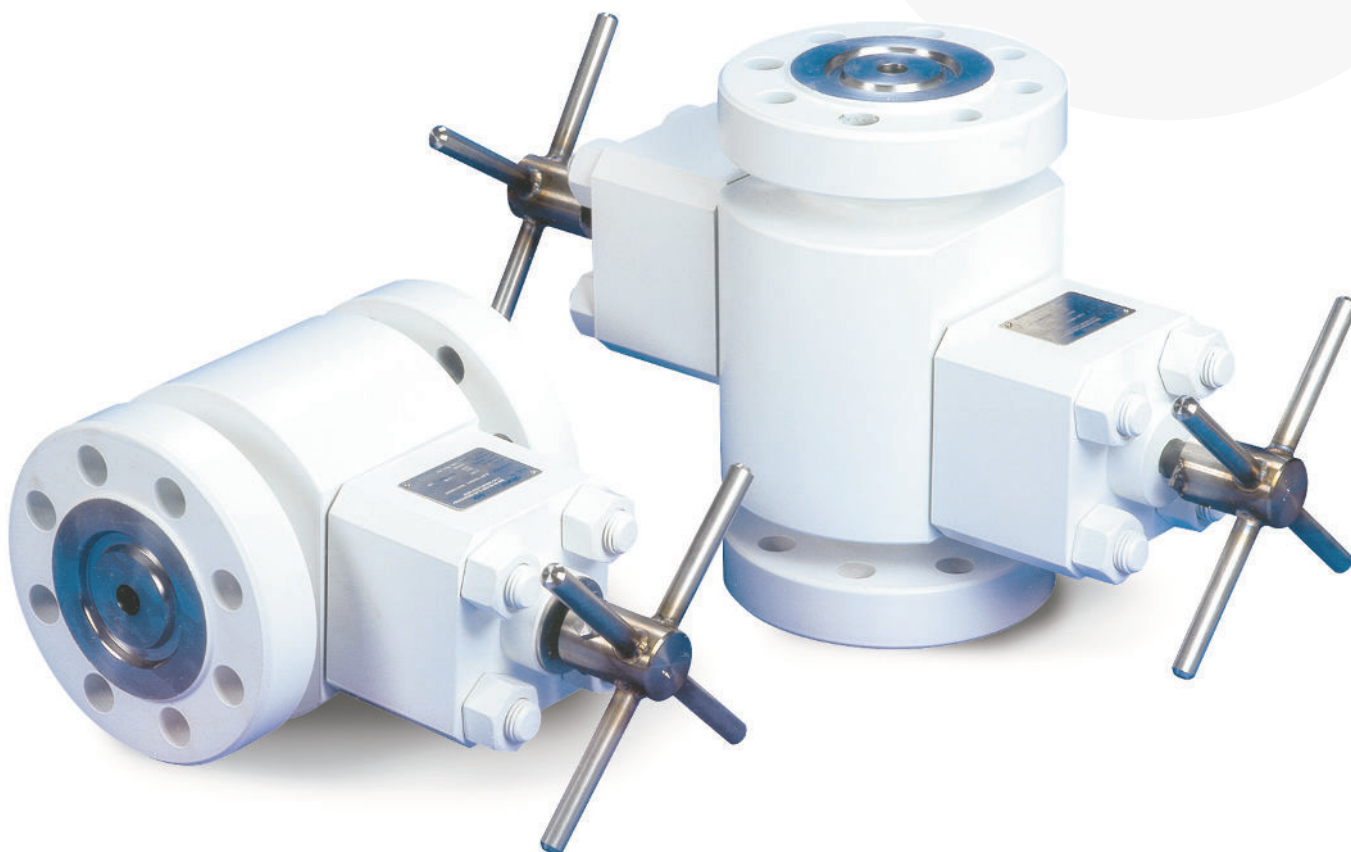


reliability
under
pressure



KEY FEATURES

- Successfully completed the PR2 Performance Verification Test of API 6A Appendix F and API 17D 2nd Edition Section 5.1.7.
- The stem seal is a unique Moly filled PTFE multi-ring chevron style gland set incorporating two spring energised 'U' cup seals.
- Metal to Metal tip to body seal and backseat.
- Three quarter turn operation provides simple position indication.
- Precision Acme threads take up the stem thrust load, reducing operating torques to a minimum.
- Non-rotating tips, ensuring positive non-galling operation during shut-off.
- Standard certification for pressure retaining and controlling parts are to API 6A PSL 3 and BS EN 10204.

TECHNICAL SPECIFICATION

- Bore size, 3/8" [10mm] as three quarter turn (0.75) option, 3/4" [19mm] or 1" [25mm].
- Pressure rating, 15,000 PSI [1034 BAR].
- Hyperbarically tested to water depths of 10,000ft [3050m].
- Performance tested to PR2 for Temperature Classifications P through X (-20°F/-29°C to +350°F/177°C).
- Available in API Material Classes FF and HH to NACE MR-01-75 latest rev.

OPERATOR

- Normal Operating Torque 55ft-lbf [75Nm], 3 turns (3/4" or 1" bore).
- Torque to Damage 500ft-lbf [670 Nm].
- Crossbar options for divers.
- Stem adaptors to suit ROV extension rods and ROV handles.

