

HALF TURN DEEPWATER MANUALLY ACTUATED GATE VALVE RANGE

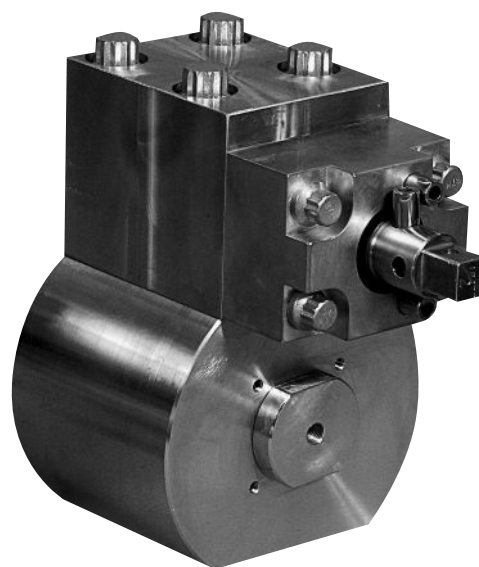
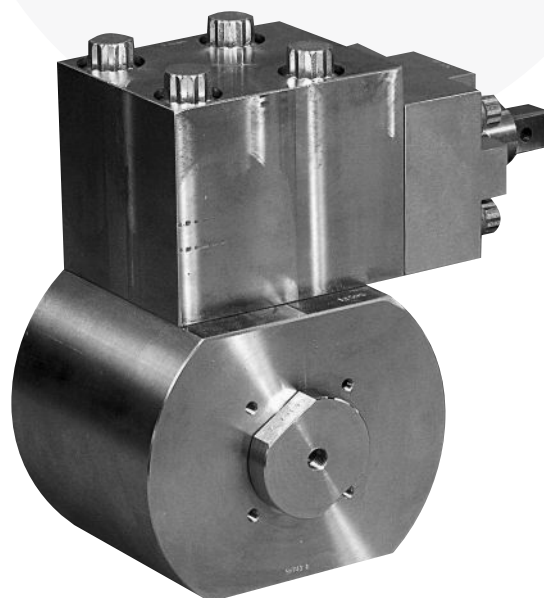
RANGE: SUBSEA VALVES

PRODUCT ID: DS-VTK-GV50-4

reliability
under
pressure

KEY FEATURES

- Successfully completed the PR2 Performance Verification Test of API 6A Appendix F and API 17D 2nd Edition Section 5.1.7.
- The stem seal is a unique Moly filled PTFE multi-ring chevron style gland set incorporating two spring energised 'U' cup seals.
- Metal to Metal seals between seat to gate, seat to body, body to bonnet and backseat.
- Wave spring behind seats provide low pressure sealing and protects the valve cavity from debris.
- Precision needle roller bearings take up the stem thrust load, reducing operating torques to a minimum.
- Half turn operation provides simple position indication.
- If stop pin shears due to overtorque, the valve internals will not be damaged and the valve can still be open and closed.
- Uninterrupted flow passage through valve.
- Unique bonnet design allows 4 alternative stem positions to align with ROV docking panel.
- Standard certification for pressure retaining and controlling parts are to API 6A PSL 3 and BS EN 10204.



TECHNICAL SPECIFICATION

- Bore size, 3/8" [10mm], 1/2" [13mm], 3/4" [19mm] and 1" [25mm].
- Pressure rating, 15,000 PSI [1034 BAR].
- Hyperbarically tested to water depths of 10,000ft [3050m].
- Performance tested to PR2 for Temperature Classifications P through X (-20°F/-29°C to +350°F/177°C).
- Available in API Material Classes FF and HH to NACE MR-01-75 latest rev.

OPERATOR

- Normal Operating Torque Range 50ft-lbf [68Nm] to 120ft-lbf [163Nm], 180 degrees.
- Torque to Damage upto 650ft-lbf [880 Nm].
- Stem adaptors to suit ROV extension rods and ROV handles.

