

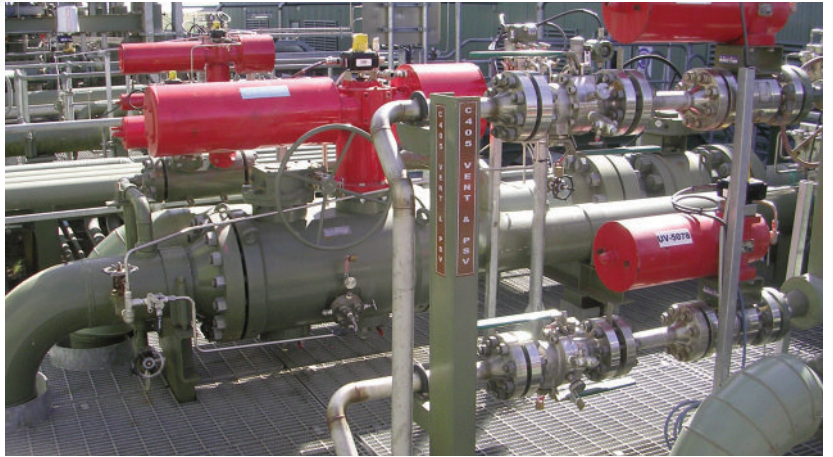
## FLOATING - FLANGED STYLE , TWO PIECE CONSTRUCTION (FSL = FLANGED STANDARD LENGTH) (FOSL = FLANGED OLIVER STANDARD LENGTH)



Both configurations are available with Metal seated 1", 1 1/2" and 2" Bores to Class 600 only.

- Two piece body.
- World Wide Patent No. 2271164.
- 1" NB Size 150, 300 lb = FOSL / 600, 900, 1500, 2500 lb = FSL
- 1 1/2" NB Size 150, 300 lb = FOSL / 600, 900, 1500, 2500 lb = FSL
- 2" NB Size 150, 300 lb = FOSL / 600, 900, 1500, 2500 lb = FSL
- 3" NB Size 150, 300, 600 lb = FOSL
- Floating Ball construction / Needle valve vent / Lever operated.

Note: All Full Bore apart from 2" 900/1500 which is reduced bore to 1 3/4" and 2" 2500 which is Reduced Bore to 1 1/2".



## FLOATING - COMPACT STYLE®, SINGLE PIECE CONSTRUCTION (CSL® = COMPACT STANDARD LENGTH)®



- One piece body.
- World Wide Patent No. 0229303.
- 1" NB Size 150, 300, 600, 900, 1500 lb = CSL
- 1 1/2" NB Size 150, 300, 600, 900, 1500 lb = CSL
- 2" NB Size 150, 300, 600, 900, 1500 lb = CSL
- 3" NB Size 300, 600 lb = CSL
- Floating Ball construction / Needle valve vent / Lever operated.

Note: All Full Bore apart from 2" 900/1500 which is Reduced Bore to 1 3/4".

