

## FLOATING TYPE BALL VALVES

RANGE: SUBSEA VALVES  
PRODUCT ID: DS-VTK-BVF-9



### KEY FEATURES

- Successfully completed the PR2 Performance Verification Test of API 6A Appendix F and API 17D.
- The stem seal is a Peek thrust seal and an FKM o-ring secondary seal.
- The spindle design is anti-blowout.
- One quarter turn operation provides simple position indication.
- Unique sprung non-elastomeric Peek seats provide low pressure sealing and protects the valve cavity from debris.
- All primary seals are non-elastomeric.
- If stop pin shears due to overtorque, the valve internals will not be damaged and the valve can still be open and closed.
- Uninterrupted flow passage through valve.
- Standard certification for pressure retaining and controlling parts are to BS EN 10204.

### TECHNICAL SPECIFICATION

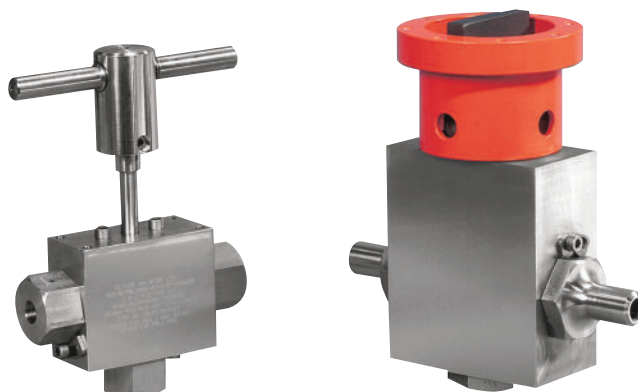
- Bore size, 0.55" [14mm]. Sizes upto 2" [50mm] available at lower pressures.
- Pressure rating, 10,000 PSI [690 BAR].
- Hyperbarically tested to water depths of 10,000ft [3050m].
- Performance tested to PR2 for Temperature Classifications U (0°F/-18°C to +250°F/120°C).
- Available in API Material Classes FF and HH to NACE MR-01-75 latest rev.

### OPERATOR

- Normal Operating Torque 20ft-lbf [27Nm], 90 degrees.
- Torque to Damage 150ft-lbf [200 Nm].
- Lever options for divers.
- Stem adaptors to suit ROV teebar or paddle handles.

## TRUNNION MOUNT BALL VALVES

RANGE: SUBSEA VALVES  
PRODUCT ID: DS-VTK-BVT-10



### KEY FEATURES

- Successfully completed the PR2 Performance Verification Test of API 6A Appendix F and API 17D 2nd Edition Section 5.1.7.
- The stem seal is a Peek thrust seal and an FKM o-ring secondary seal. Tertiary spring energised gland seal set option.
- The spindle design is anti-blowout.
- One quarter turn operation provides simple position indication.
- Disk spring energised Peek seats provide low pressure sealing and protects the valve cavity from debris.
- With the trunnion design, upstream and downstream sealing is achieved.
- Two way, three way, and four way designs available.
- If stop pin shears due to overtorque, the valve internals will not be damaged and the valve can still be open and closed.
- Uninterrupted flow passage through valve.
- Standard certification for pressure retaining and controlling parts are to BS EN 10204.

### TECHNICAL SPECIFICATION

- Bore size, 3/8" [10mm] and 1/2" [13mm]. Sizes upto 2" [50mm] available at lower pressures.
- Pressure rating, 15,000 PSI [1034 BAR].
- Hyperbarically tested to water depths of 10,000ft [3050m].
- Performance tested to PR2 for Temperature Classifications U (0°F/-18°C to +250°F/120°C).
- Available in API Material Classes FF and HH to NACE MR-01-75 latest rev.

### OPERATOR

- Normal Operating Torque 20ft-lbf [27Nm], 90 degrees.
- Torque to Damage 200ft-lbf [270 Nm].
- Lever options for divers.
- Stem adaptors to suit ROV teebar or paddle handles

