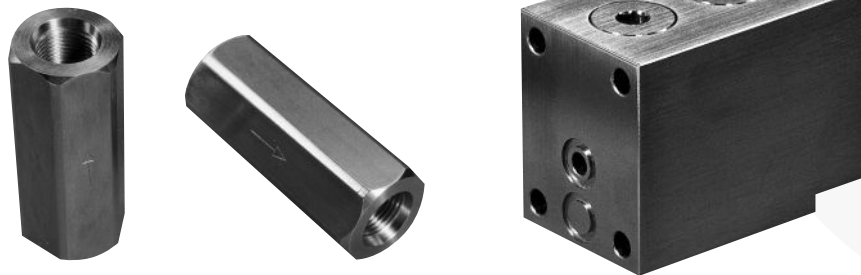


## CHECK VALVES

**3/8" CHECK VALVE**  
**RANGE: SUBSEA VALVES**  
**PRODUCT ID: DS-VTK-CV38-12**



### KEY FEATURES

- The poppet design of check valve has a PTFE primary seal with a metal to metal back-up.
- Design ideally suited for hydraulic control fluid applications.
- Standard certification for pressure retaining and controlling parts are to API 6A and BS EN 10204.

### TECHNICAL SPECIFICATION

- Bore size, 0.38" [10mm].
- Pressure rating, 10,000 PSI [690 BAR].
- Operating temperature range of (-20°F/-29°C +250°F/120°C).
- Available in Stainless Steels and Nickel Alloys.

### OPERATOR

- Normal Cracking Pressure 7 PSI [0.5 BAR].
- Optional Cracking Pressure to 500 PSI [35 BAR].

## 3/4" & 1" CHECK VALVES

**RANGE: SUBSEA VALVES**  
**PRODUCT ID: DS-VTK-CV75-13**



### KEY FEATURES

- Successfully completed the PR2 Performance Verification Test of API 6A Appendix F and API 17D 2nd Edition Section 5.1.7.
- The poppet design of check valve has a Peek primary seal with a metal to metal back-up.
- Flow tested for accurate pressure loss data.
- Design ideally suited to be incorporated with gate or needle valves for chemical injection applications.
- Standard certification for pressure retaining and controlling parts are to API 6D and BS EN 10204.

### TECHNICAL SPECIFICATION

- Bore size, 0.75" [19mm] and 1.00" [25mm].
- Pressure rating, 15,000 PSI [1034 BAR].
- Performance tested to PR2 for Temperature Classifications P through X (-20°F/-29°C to +350°F/177°C).
- Available in API Material Classes FF and HH to NACE MR-01-75 latest rev.

### OPERATOR

- Normal Cracking Pressure 25 PSI [1.7 BAR].



**RELIEF VALVE**  
**RANGE: SUBSEA VALVES**  
**PRODUCT ID: DS-VTK-RV-14**

**RELIEF VALVE &  
POSITION INDICATION**



**KEY FEATURES**

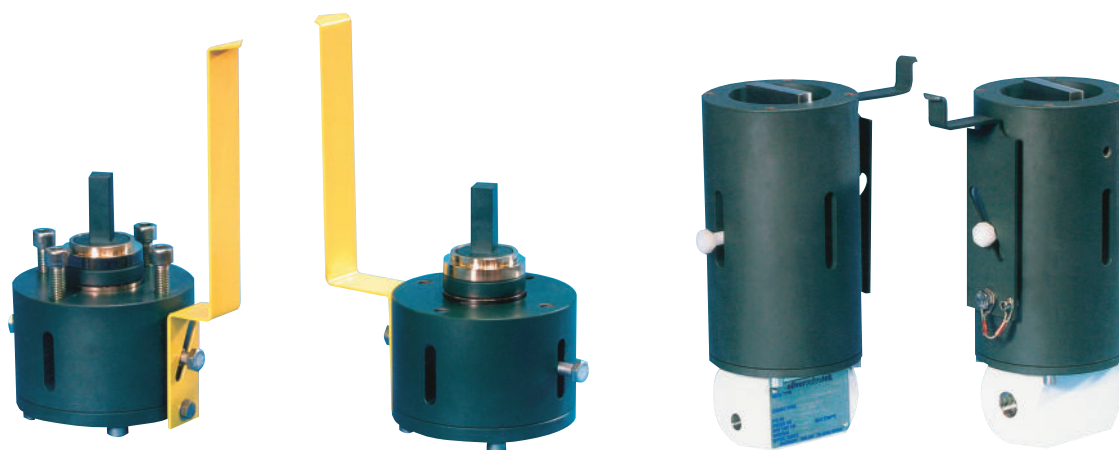
- Pressure relief valve, material of body construction being BS 970 316S11 stainless steel spindle material of 316 stainless steel.
- Inlet connection is a 1/8" NPT male thread.
- Certification for materials of wetted pressure retaining parts (i.e. body and spindle) are traceable to original material certification to BS EN 10204.

**TECHNICAL SPECIFICATION**

- The valve has been designed and tested to have a cracking pressure of 10 PSI to 20 PSI and a reverse sealing pressure of 5,000 PSI.
- The operating temperature range is - 40°C to 121°C.

**POSITION INDICATION**

**RANGE: SUBSEA VALVES**  
**PRODUCT ID: DS-VTK-PI-15**



**KEY FEATURES**

- Simple and robust position indication system for ROV operation.
- Suitable for fitting to a range of different high and low torque ROV receptacles.
- Easily adaptable for different number of turns, sweep of indicating arm and location of indicating arm.

**TECHNICAL SPECIFICATION**

- Suitable for water depths to 10,000ft [3050m].
- Performance tested for 200 full operating cycle.

