

## ACCUTRAK™ 3479/E3479 LINEAR POSITION MONITORS

EXPLOSIONPROOF/FLAMEPROOF – NEC/CEC/ATEX/IECEX

The AccuTrak™ 3479/E3479 (MOD3) combine the functionality of an explosionproof junction housing and position sensors to provide cost-effective monitoring of linear control and knife gate valves



### FEATURES

- Magnum limit switches with rhodium contacts recommended for use with low power I/O's for longer contact life.
- Factory pre-wired SPDT hermetically sealed proximity switches provide labor savings for position sensing of smaller valves.
- Aluminum enclosures with ultra-low copper content (0.2% maximum) ensure robust performance in corrosive environments.
- Conduit entries and numbered terminal strip for convenient integration of a solenoid valve.
- Easy back-wiring of 316 SB or 316 LT Silver Bullet switches to accommodate position sensing of large valves.
- Triggering bolts included.
- Optional OSHA compliant, adjustable triggering system available in nylon or stainless steel.
- 316 stainless steel housing option available

### TECHNICAL DATA

#### Agency approvals

Explosionproof - North America\*\*  
Model 3479

Class I, Div. 1, Grps B, C, D;  
Class I, Div. 2, Grps A, B, C, D;  
Class II, Div. 1, Grps E, F, G;  
Type 4

Model E3479

Class I, Div. 1, Grps C, D;  
Class II, Div. 1, Grps E, F, G;  
Type 4

Flameproof - ATEX/IECEX\*\*  
Model 3479/E3479

II 2 G Ex db IIC T\* Gb  
II 2 D Ex tb IIIC T\*°C Db  
IP 6X

#### Switches

Magnum

SPDT hermetically sealed proximity switches

#### Enclosure

Model 3479/E3479

Aluminum, Stainless Steel

### GENERAL APPLICATION

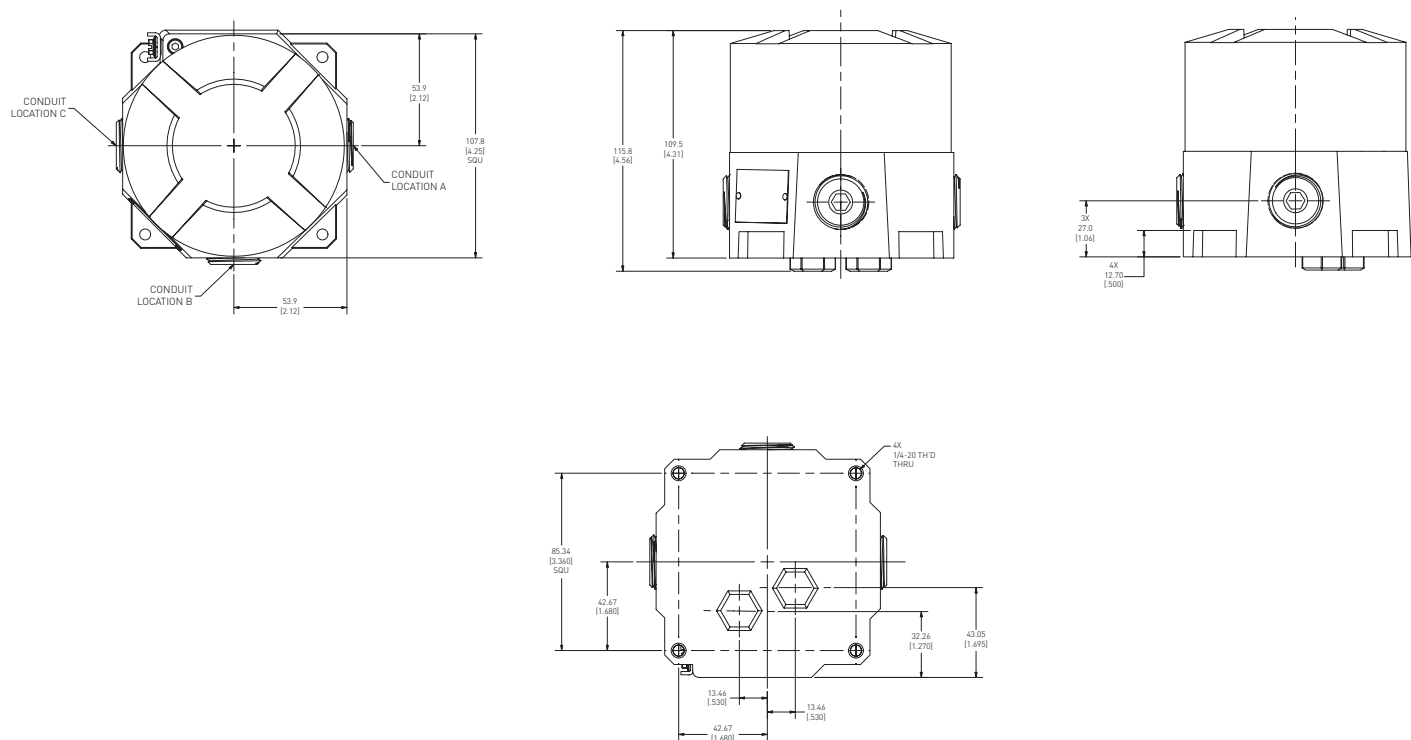
The AccuTrak 3479/E3479 (MOD3) position monitors provide consistent and accurate monitoring of linear valves through the use of an explosionproof junction housing and hermetically sealed proximity switches.

\*\*Consult appropriate agency approval certificate for safe temperature range

# ACCUTRAK™ 3479/E3479 LINEAR POSITION MONITORS

EXPLOSIONPROOF/FLAMEPROOF – NEC/CEC/ATEX/IECEX

MODEL 3479 MOD3 DIMENSIONS (ALUMINUM)



## TECHNICAL SPECIFICATIONS

### Materials of construction

Enclosure	Aluminum with powder coat finish
Hermetic Seal	Glass (vacuum)
Switch temp. range	-40°F to +220°F
Operational Life	600,000 cycles (full rated load)
Switch Actuation	Ferromagnetic (stainless steel encapsulated)
Sensing Distance	0.100" end sensing
Operating Time	3.0 ms
Repeatability	0.127 mm (0.005 inch)
Hysteresis	0.762 mm (0.030 inch)
Available switches	Magnum, SPDT hermetically sealed switches with tungsten contacts Magnum, SPDT hermetically sealed switches with rhodium contacts

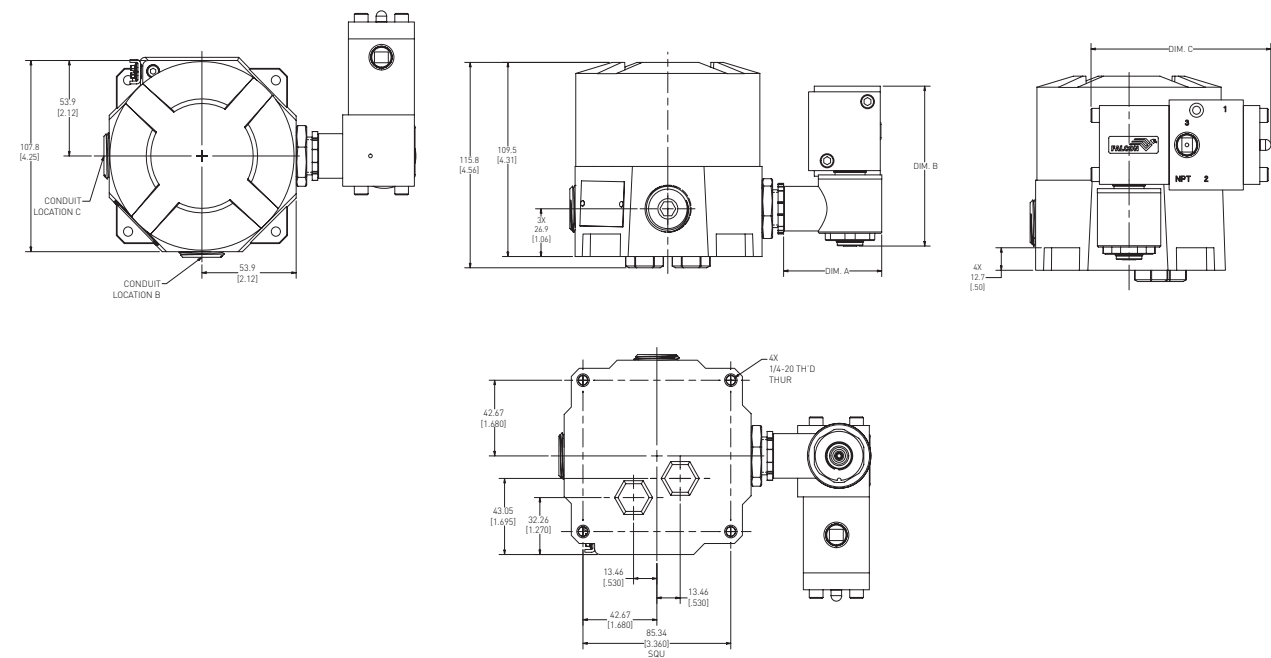
## NOTES

1. See selection guide for standard conduit entries
2. See switches & sensors data sheet for further information
3. An integral approved eliminator fitting is available for the mounting of an aftermarket solenoid valve
4. Please consult your sales office for any special requirements
5. Please contact your sales office for guidance on selecting the best possible combination for your control and monitoring requirements
6. See Hazardous area classification technical bulletin for further information on global standards

ACCUTRAK™ 3479/E3479 LINEAR POSITION MONITORS

EXPLOSIONPROOF/FLAMEPROOF – NEC/CEC/ATEX/IECEX

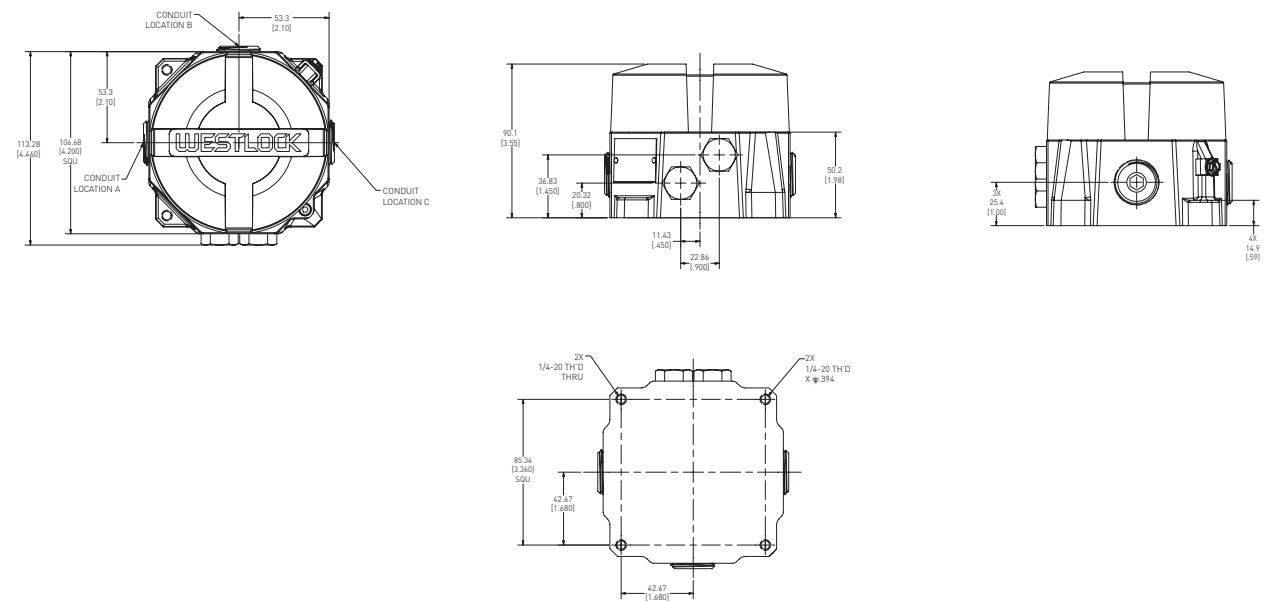
MODEL E3479 MOD3 DIMENSIONS WITH SOLENOID (ALUMINUM)



VALVE DIMENSIONS

VALVE OPTIONS	DIM A.	DIM B	DIM C
1.4Cv, 3-Way, Brass/Aluminum/316 SS	56.7 [2.24]	90.2 [3.56]	103.9 [4.09]
1.4Cv, 4-Way, Brass/Aluminum/316 SS	56.7 [2.24]	90.2 [3.56]	124.6 [4.91]

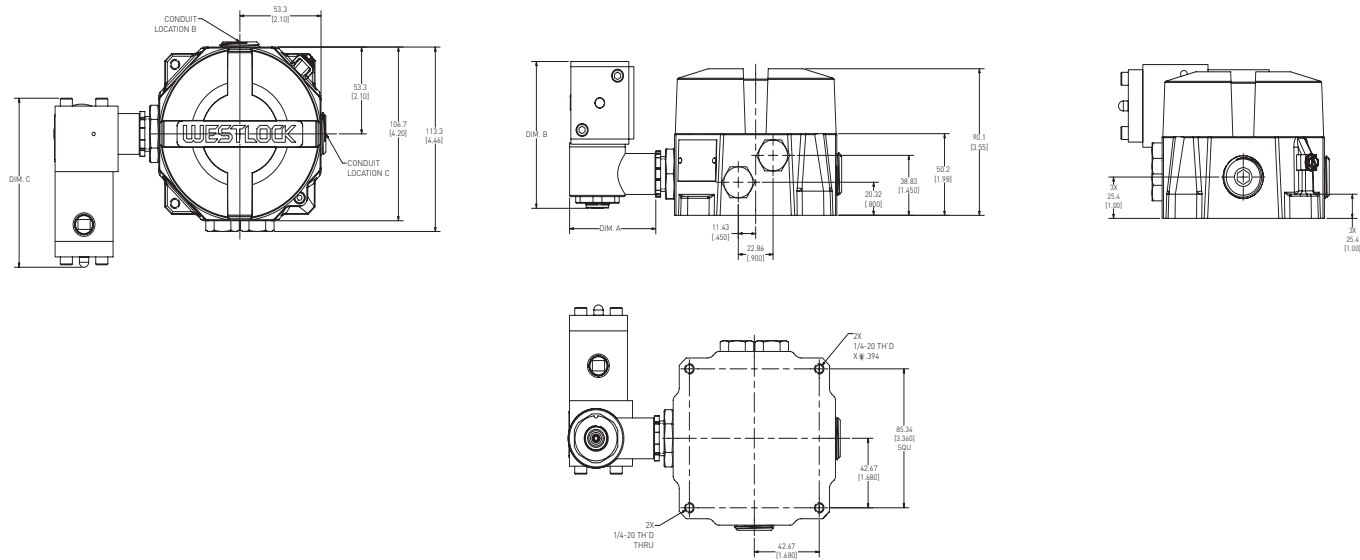
MODEL 3479 MOD3 DIMENSIONS (STAINLESS STEEL)



ACCUTRAK™ 3479/E3479 LINEAR POSITION MONITORS

EXPLOSIONPROOF/FLAMEPROOF – NEC/CEC/ATEX/IECEX

MODEL E3479 MOD3 DIMENSIONS WITH SOLENOID (STAINLESS STEEL)



VALVE DIMENSIONS

VALVE OPTIONS	DIM A.	DIM B	DIM C
1.4Cv, 3-Way, Brass/Aluminum/316 SS	56.7 [2.24]	90.2 [3.56]	103.9 [4.09]
1.4Cv, 4-Way, Brass/Aluminum/316 SS	56.7 [2.24]	90.2 [3.56]	124.6 [4.91]

ORDERING GUIDE FOR 3479

Base Model						
3479	Aluminum Enclosure, 10 pt. Terminal Strip					
	Shaft Output					
	0	Not available				
		Beacon				
		00	Not available			
			Conduit			
			3B	Three 3/4NPT (F)		
			3E	Two 3/4NPT (F) & One 1/2NPT (M) Eliminator Fitting (for after-market solenoid valve mounting)		
			3S	Three M25 (F)		
				Position Switches		
				2M06	Two Bottom-Mounted SPDT Magnum Switches	
				2M12	Two Bottom-Mounted SPDT Magnum Switches with Rhodium Contacts	
					Analog Position Transmitter	
					00	Not available
						Unit Options (leave blank for standard builds)
						00124 316 Stainless Steel Enclosure (available only with side-mounted switches)
3479	0	00	3B	2M12	00	= Model Number 34790003B2M1200

PROXIMITY SWITCH APPLICATION NOTE:

For 24 VDC service below 1 watt, M12 (Rhodium Magnum) is recommended  
For 24 VDC service above 1 watt, M06 (Tungsten Magnum) is recommended

**ACCUTRAK™ 3479/E3479 LINEAR POSITION MONITORS**

EXPLOSIONPROOF/FLAMEPROOF – NEC/CEC/ATEX/IECEX

ORDERING GUIDE FOR E3479

Base Model											
E3479	Aluminum Enclosure, 10 pt. Terminal Strip										
Shaft Output											
0	Any Shaft Output										
Beacon											
00	Any Beacon										
Conduit											
3E	Two 3/4NPT (F) & One 1/2NPT (M) Eliminator Fitting										
3X	Two M25 (F) & One 1/2NPT (M) Eliminator Fitting										
Position Switches											
2M06	Two Bottom-Mounted SPDT Magnum Switches										
2M12	Two Bottom-Mounted SPDT Magnum Switches with Rhodium Contacts										
Analog Position Transmitter											
00	Not available										
Coil Voltage											
ET	24 VDC, 1.8 watt, 1/2NPT female conduit, stainless steel housing, potted coil										
EZ	120 VAC, 1.8 watt, 1/2NPT female conduit, stainless steel housing, potted coil										
Coil Temperature Rating											
0	Ordinary temperature (-20°C service)										
L	Low Temperature (-40°C service) - <b>requires valve option "X"</b>										
FalconV Valve Body											
2V3	1.4Cv, 3-Way, Brass, 1/4NPT	2V7	1.4Cv, 4-Way, Brass, 1/4NPT								
3V3	1.4Cv, 3-Way, Alm., 1/4NPT	3V7	1.4Cv, 4-Way, Alm., 1/4NPT								
5V3	1.4Cv, 3-Way, 316 SS, 1/4NPT	5V7	1.4Cv, 4-Way, 316 SS, 1/4NPT								
3B3	1.4Cv, 3-Way, Alm., 1/4BSP	3B7	1.4Cv, 4-Way, Alm., 1/4BSP								
5B3	1.4Cv, 3-Way, 316 SS, 1/4BSP	5B7	1.4Cv, 4-Way, 316 SS, 1/4BSP								
Valve Options											
0	None										
X	Low Temperature Seal - <b>requires Coil Temperature Rating "L"</b>										
M	Momentary Override										
L	Locking Override										
E	External Pilot ( <b>required for inlet pressures below 45 psi</b> )										
Unit Options (leave blank for standard builds)											
00124	316 Stainless Steel Enclosure (available only with side-mounted switches)										
E3479	0	00	3B	2M12	00	ET	L	2V3	X	00124	= Model Number E34790003B2M1200ETL2V3X00124

**PROXIMITY SWITCH APPLICATION NOTE:**

For 24 VDC **service below 1 watt**, M12 (Rhodium Magnum) is recommended

For 24 VDC **service above 1 watt**, M06 (Tungsten Magnum) is recommended

**ACCUTRAK™ 3479/E3479 LINEAR POSITION MONITORS**

EXPLOSIONPROOF/FLAMEPROOF – NEC/CEC/ATEX/IECEX



**Translations**

Where translated, the copy is taken from the original English document TD10001-EN as checked by the relevant notified certification body and therefore the original English document will prevail. No rights or liability can be derived from any translation.

Crane Co., and its subsidiaries cannot accept responsibility for possible errors in catalogues, brochures, other printed materials, and website information. Crane Co. reserves the right to alter its products without notice, including products already on order provided that such alteration can be made without changes being necessary in specifications already agreed. All trademarks in this material are the property of the Crane Co. or its subsidiaries. The Crane and Crane brands logotype (WESTLOCK CONTROLS®) are registered trademarks of Crane Co. All rights reserved.

**WESTLOCK CONTROLS**

Head Office	USA	Europe	Asia
280 N. Midland Avenue, Ste 258	+1 201 794 7650	+44 (0)1892 516277	+65 6266 4535
Saddle Brook, NJ 07663			
United States	westlockcontrols.com		