

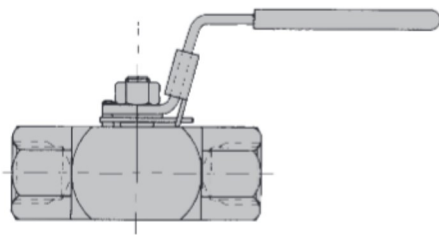
reliability
pressure

HANDLE LOCKING OPTION



Valves can be locked in either the open or closed position with padlock available.
Suffix / HL.

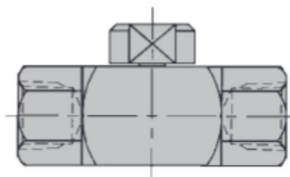
Note: Padlock is extra.
Suffix / PAD.



SPANNER ACTUATED OPTION



With Spanner actuation the valve is operated using a 1" A/F spanner, reducing tampering and accidental operation.
Suffix / SA.



PMB PANEL MOUNT OPTION



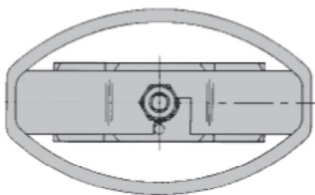
For all three piece ball valve body sizes this simple, and cost effective handle solution is a clear advantage.
Suffix / PMB.

PANEL MOUNT OPTION



For all three piece ball valve body sizes this simple, and cost effective handle solution is a clear advantage.
Suffix / PM.

OVAL HANDLE OPTION



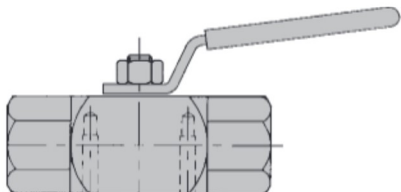
An oval handle can be fitted as an option to the standard lever style (Plan view shown).
Suffix / OH.

ACTUATED BALL VALVE OPTION



A range of air, pneumatic or electric actuators can be factory or plant fitted to any Oliver ball valve.

TANGENTIAL LOCKING PIN OPTION



This simple but effective patented solution totally eliminates any possibility of inadvertent removal of end connector pieces by operator or vibration whilst in service.
Suffix / PE.

FIRESAFE/ANTI-STATIC OPTION

Tested to BS6755 part 2, these valves have body and stem seals in fire resistant Graphite. The metal lip seat is designed to ensure leak free seating when the seats burns in fire conditions. The spindle disc springs ensure a positive leak-free gland.

